



Insight (v2) Browser - IIS Configuration Guide

PLEASE BROWSE TO <http://www.ddyn.com/> FOR ADDITIONAL TECHNICAL SUPPORT AND FAQ

Supported Operating Systems:

- Windows XP SP3
- Windows Server 2003 SP2
- Windows Vista SP1
- Windows 7
- Windows Server 2008
- Windows Server 2008 R2

Software Prerequisites:

- Microsoft.NET Framework 4 (Full) or higher (Provided with installer)
- Internet Information Systems (IIS) 7 or higher

Recommended Internet Information Services (IIS) Configuration Procedure:

During installation the InsightNet installer attempts to setup InsightNet under **Default Web Site** within IIS to reduce manual administration. However these steps may not be possible depending on the current configuration of the host IIS. Therefore these manual setup steps may be required and should be adjusted for the host's particular configuration of IIS.

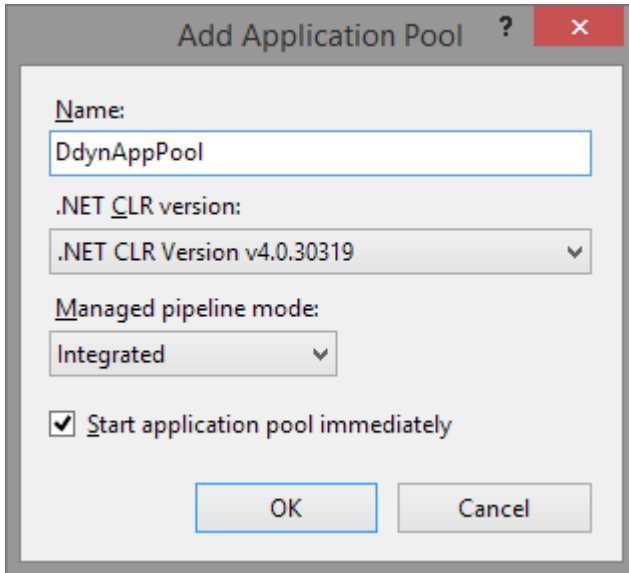
NB: This procedure should be performed once the InsightNet has been installed and is only required if the application fails to execute.

1. Click **Start > Administrative Tools > Internet Information Services (IIS) Manager**
2. From the left menu, expand the corresponding server name node.

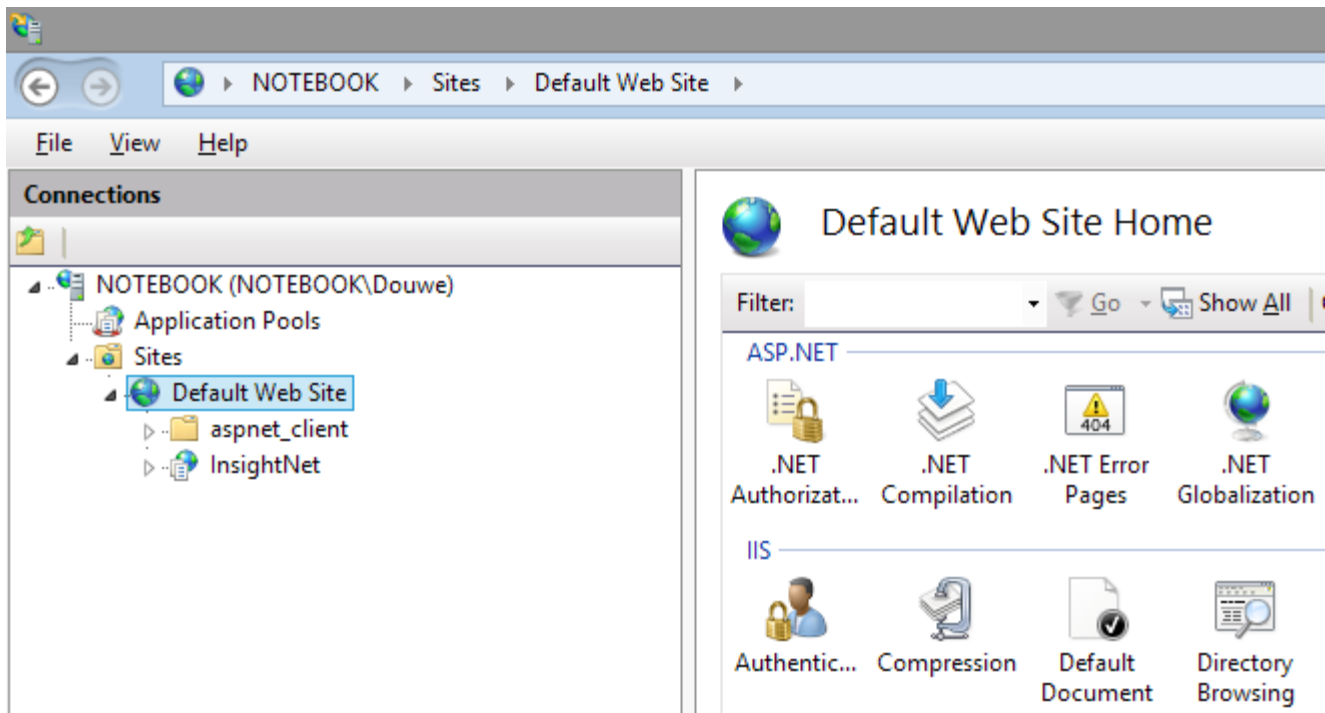
The screenshot shows the Internet Information Services (IIS) Manager console. The left-hand pane displays the 'Connections' tree for 'NOTEBOOK (NOTEBOOK\Douwe)', with 'Application Pools' selected. The right-hand pane, titled 'Application Pools', contains a table listing the configured application pools. The table has columns for Name, Status, and .NET Framework version. All listed pools are in a 'Started' state.

Name	Status	.NET
.NET v4.5	Started	v4.0
.NET v4.5 Classic	Started	v4.0
DdynAppPool	Started	v4.0
DefaultAppPool	Started	v4.0

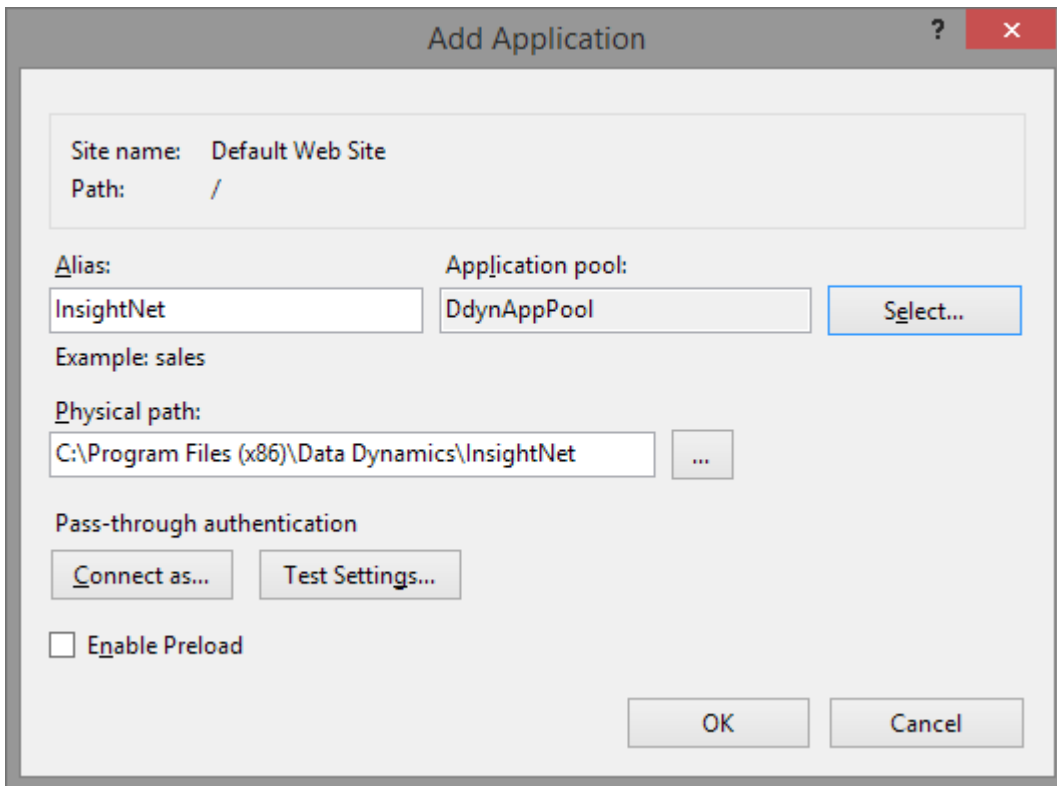
3. Right-click **Application Pools** and select **Add Application Pool** from the menu.
 - From the **Add Application Pool** dialog:
 - Enter '**DdynAppPool**' in the **Name** field.
 - Change the **.NET Framework Version** to **v4.0** or greater.
 - Ensure **Managed Pipeline Mode** is set to **Integrated**.
 - Select **Start Application Pool Immediately**
 - Click **OK** to close the **Add Application Pool** dialog



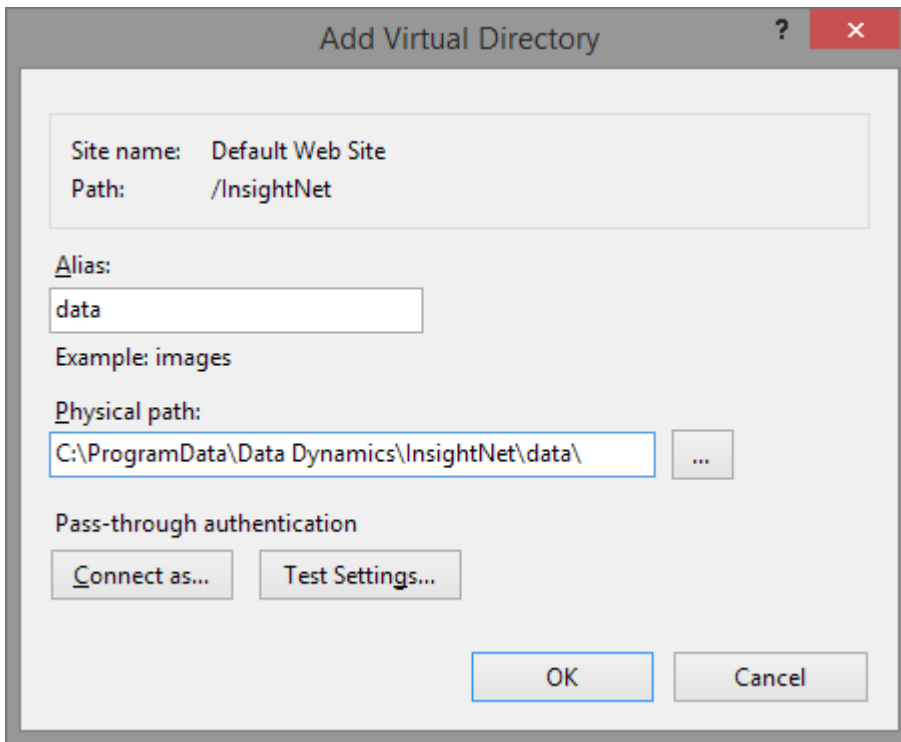
4. Expand **Sites** in the left menu, ensure the **InsightNet** application is visible under **Default Web Site** or the intranet website accessible to your users.
5. If **InsightNet** is PRESENT under the applicable website, right-click **InsightNet** node and select **Convert to application**.



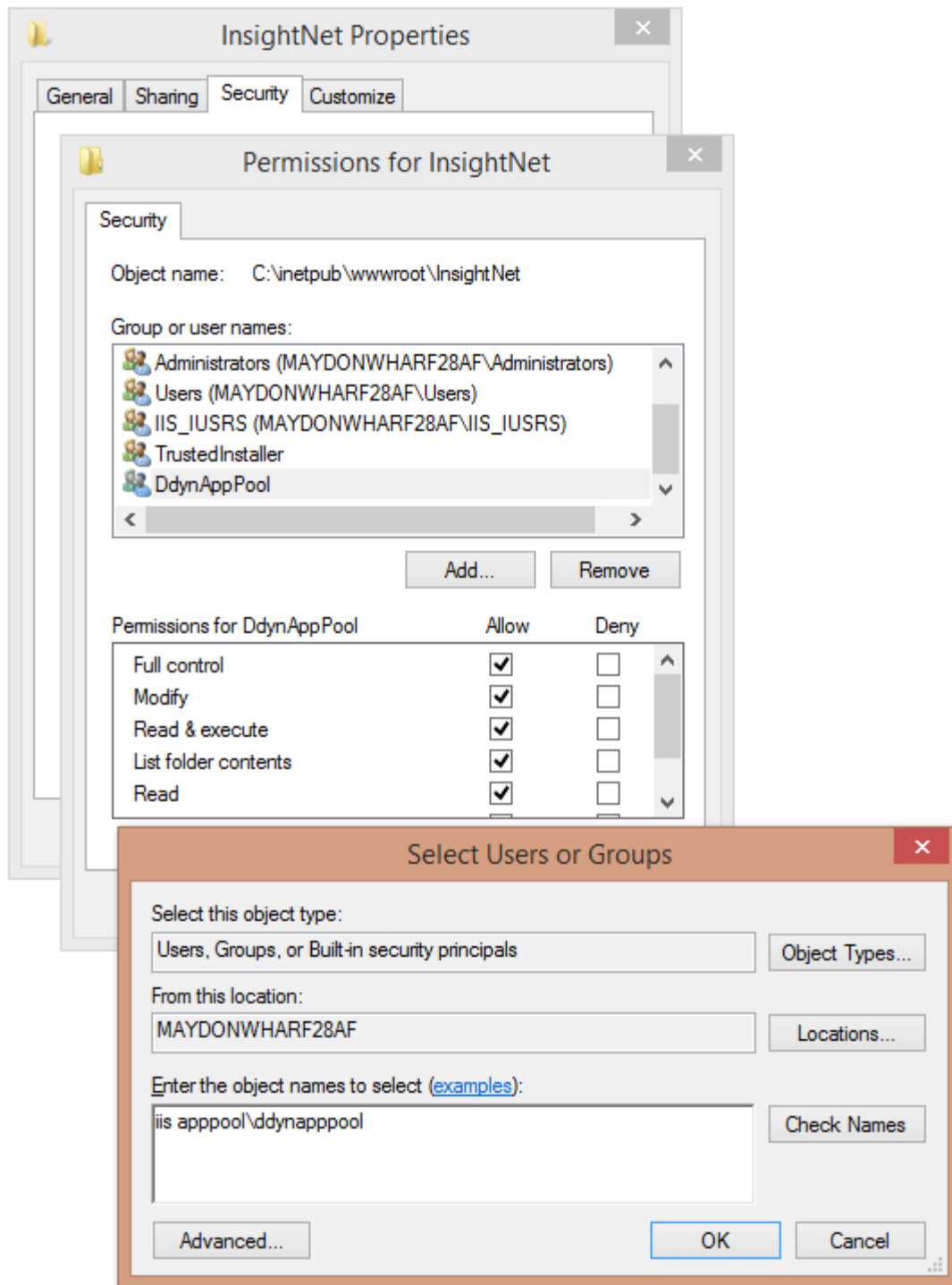
6. If **InsightNet** is NOT PRESENT under the applicable website, right-click the website and select **Add Application**.
 - From the **Add Application** dialog:
 - Type **InsightNet** in the **Alias** field if it is not already present.
 - Change the **Application pool** by clicking on **Select** and selecting the '**DdynAppPool**' application pool we created in step 3.
 - Change the physical path to reflect the location of the **InsightNet Application** directory selected during installation if not already present. e.g. **C:\Program Files (x86)\Data Dynamics\InsightNet**
 - Under **Pass-through authentication** click on **Connect as**.
 - In the **Connect As** dialog:
 - Select **Application user (pass-through authentication)**
 - Click **OK** to close the **Connect As** dialog
 - Click **OK** to close the **Add Application** dialog.



7. Select the **InsightNet** application in the tree, right-click the entry and select **Add Virtual Directory**.
 - From the **Add Virtual Directory** dialog:
 - Type '**data**' in the **Alias** field
 - Change the **Physical path** to reflect the location of the **InsightNet Data** directory selected during installation. e.g. **C:\ProgramData\Data Dynamics\InsightNet\Data**
 - Under **Pass-through authentication** click on **Connect as**.
 - In the **Connect As** dialog:
 - Select **Application user (pass-through authentication)**
 - Click **OK** to close the **Connect As** dialog
 - Click **OK** to close the **Add Virtual Directory** dialog.



8. Select the **InsightNet** application in the tree, right-click the entry and select **'Edit Permissions'**
 - On the **'InsightNet Properties'** dialog, select the **'Security'** tab click **'Edit'**
 - On the **'Permissions for InsightNet'** dialog, click **'Add'**
 - On the **'Select users and groups'** dialog, type **'iis appool\ddynappool'**
 - Click **'Check Names'** to ensure that the user account is exists and click **'OK'**
 - NB: If the account name is not found please ensure that **'Locations'** is set to the local domain.
 - Click **'OK'** to close the dialog.
 - Click the **'Full Control'** checkbox under the **'Allow'** column and click **'OK'** to apply all settings.



9. Perform **Step 8** on the 'data' virtual directory created in **STEP 7**.