

PROCLAMATIONS • PROKLAMASIES

DEPARTMENT OF FORESTRY, FISHERIES AND ENVIRONMENT

NO. 315

29 May 2026

WORLD HERITAGE CONVENTION ACT, 1999 (ACT NO. 49 OF 1999)

NOTICE OF INTENTION TO PROCLAIM CERTAIN LAND SITUATED IN THE EASTERN CAPE, FREE STATE, AND GAUTENG PROVINCES TO BE THE HUMAN RIGHTS, LIBERATION AND RECONCILIATION: NELSON MANDELA LEGACY SITES WORLD HERITAGE SITE AND TO DECLARE MANAGEMENT AUTHORITIES

I, Willem Abraham Stephanus Aucamp, Minister of Forestry, Fisheries and the Environment, hereby, in terms of sections 1(xxiv)(a), 7 and 8 of the World Heritage Convention Act, 1999 (Act No. 49 of 1999), give notice of my intention to proclaim certain land situated in the Eastern Cape, Free State and Gauteng Provinces, as components of the Human Rights, Liberation and Reconciliation: Nelson Mandela Legacy Sites World Heritage Site, as set out in the Schedule hereto.

The Human Rights, Liberation and Reconciliation: Nelson Mandela Legacy Sites World Heritage Site is composed of the following components:

COMPONENT	PROVINCE	PROPOSED MANAGEMENT AUTHORITY
Union Buildings	Gauteng	Director-General at the Presidency of the Republic of South Africa
Walter Sisulu Square	Gauteng	Executive Mayor of the City of Johannesburg
Sharpeville Massacre Site: Police Station	Gauteng	Executive Mayor of Sedibeng District Municipality
Sharpeville Memorial Garden	Gauteng	Executive Mayor of Sedibeng District Municipality
Sharpeville Graves Site A	Gauteng	Executive Mayor of Sedibeng District Municipality
Sharpeville Graves Site B	Gauteng	Executive Mayor of Sedibeng District Municipality
16 June 1976 – The Streets of Orlando West	Gauteng	Executive Mayor of the City of Johannesburg
Constitution Hill	Gauteng	The Constitutional Hill Development Company SOC Ltd
University of Fort Hare	Eastern Cape	Vice Chancellor and Principal of University of Fort Hare
Waaihoek Wesleyan Church	Free State	MEC for Sport, Arts, Culture & Recreation, Free State Province

The Management Authorities shall exercise those powers and duties referred to in sections 13(1) and (2), and 15 of the World Heritage Convention Act, 1999 (Act No. 49 of 1999). In order for the Management Authorities to be able to perform their duties, I furthermore intend to declare that sections 21, 22, 33, 34, 35, and 42 of the World Heritage Convention Act, 1999 (Act No. 49 of 1999) and applicable sections of the National Environmental Management: Protected Areas Act, 2003 (Act No. 57 of 2003) shall apply to the Management Authorities.

Members of the public are invited to submit written representations or objections to my notice of intention, within 30 (thirty) days from the date of publication of this notice in the *Government Gazette*, or newspapers, whichever date is the last date of publication, to any of the following addresses:


By post to: The Director-General: Department of Forestry, Fisheries and the Environment
Attention: Ms Thumeka Ntloko
Private Bag X 477
Pretoria
0001

By hand: Ground Floor (Reception), Environment House Building, 473 Steve Biko Street, Arcadia, Pretoria, 0083.

By email: TNtloko@dfre.gov.za / whsmanagement@dfre.gov.za

Any inquiries in connection with this notice can be directed to Ms T Ntloko on (012) 399 9531.

Comments received after the closing date may not be considered.


WILLEM ABRAHAM STEPHANUS AUCAMP
MINISTER OF FORESTRY, FISHERIES AND THE ENVIRONMENT

SCHEDULE

ANNEXURE 1

NOTICE OF INTENTION TO PROCLAIM CERTAIN LAND SITUATED IN THE EASTERN CAPE, FREE STATE, AND GAUTENG PROVINCES TO BE THE HUMAN RIGHTS, LIBERATION AND RECONCILIATION: NELSON MANDELA LEGACY SITES WORLD HERITAGE SITE AND TO DECLARE MANAGEMENT AUTHORITIES

The Human Rights, Liberation and Reconciliation: Nelson Mandela Legacy Sites World Heritage Site is made up of the following components

Component of the serial property	Province	Coordinates of Central Point	Area of Core and Buffer Zone
Union Buildings	Gauteng Province	25°44'26.49"S, 28°12'42.45"E	Core: 17.25 ha Buffer: 60.62 ha As described in Annexure 1(A)
Walter Sisulu Square	Gauteng Province	26°16'40.35"S, 27°53'20.02"E	Core: 2.05 ha Buffer: 4.90 ha As described in Annexure 1(B)
Sharpeville Massacre Site: Police Station	Gauteng Province	26°41'18.18"S, 27°52'18.97"E	Core: 0.76 ha Buffer: 6.82 ha As described in Annexure 1(C)
Sharpeville Memorial Garden	Gauteng Province	26°41'15.41"S, 27°52'16.63"E	Core: 0.17 ha Buffer: 3.16 ha As described in Annexure 1(D)
Sharpeville Graves Site A	Gauteng Province	26°40'19.46"S, 27°53'14.73"E	Core: 0.0194 ha Buffer: 34.60 ha As described in Annexure 1(E)
Sharpeville Graves Site B	Gauteng Province	26°40'20.86"S, 27°53'13.75"E	Core: 0.00218 ha Buffer: 34.79 ha: As described in Annexure 1(F)
16 June 1976 – The Streets of Orlando West	Gauteng Province	26°14'19.94"S, 27°54'25.18"E	Core: 3.19 ha Buffer: 0 ha As described in Annexure 1(H)
Constitution Hill	Gauteng Province	26°11'23.14"S, 28°02'35.41"E	Core: 5.34 ha Buffer: 5.10 ha As described in Annexure 1(I)
University of Fort Hare	Eastern Cape Province	32°47'9.27"S, 26°50'44.95"E	Core: 4.94 ha Buffer: 85.62 ha

			As described in Annexure 1(K)
Waihoek Wesleyan Church	Free State Province	29°7'24.61"S, 26°13'24.93"E	Core: 0.27 ha Buffer: 1.61 ha As described in Annexure 1(M)

Hereunder is a detailed description of these components:

ANNEXURE 1 (A)

NAME OF THE SITE:

Union Buildings

PROVINCE:

Gauteng Province

EXACT LOCATION OF THE SITE ON MAP WITH GEOGRAPHICAL COORDINATE:

Location of the site:

The proposed site is located at the Remainder of Portion 26, 209 and 65 of Farm Elandspoot 357 JR held by Deed of Transfer No.T 5565/1908, Portion 209 of Farm Elandspoot 357 JR and Portion 65 of Farm Elandspoot 357 JR.

Geographical Coordinates:

Centre of the World Heritage Site: 25°44'26.49"S, 28°12'42.45"E

The description of the boundaries:

The Core

The core of the proposed site lies on the south facing slope of Meintjieskop hill. Within its boundaries are the Union Buildings, with a small section of the gardens to its north, the gardens to its east and west, the terraced gardens to its south, and with the amphitheatre of the South African Police Services (SAPS) memorial to the south-east of the building. The core of the proposed site is bound by coordinates as outlined below:

Geographic Co-ordinates

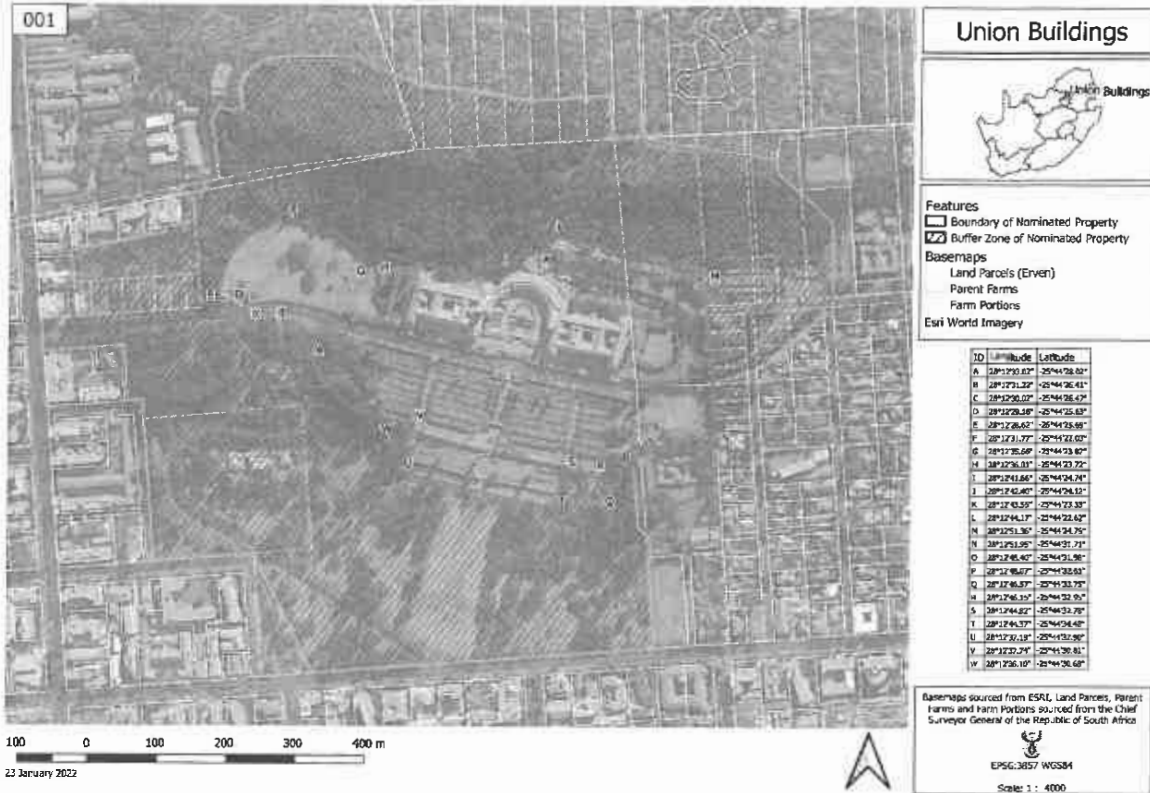
ID	Longitude	Latitude
A	28°12'33.02"	-25°44'28.02"
B	28°12'31.22"	-25°44'26.41"
C	28°12'30.02"	-25°44'26.47"
D	28°12'29.18"	-25°44'25.63"
E	28°12'28.62"	-25°44'25.69"
F	28°12'31.77"	-25°44'22.03"
G	28°12' 35.66"	-25°44'23.87"
H	28°12'36.01"	-25°44'23.72"
I	28°12'41,66"	-25°44'24.74"
J	28°12'42.40"	-25°44'24.12"
K	28°12'43.55"	-25°44'23.33"
L	28°12'44.17"	-25°44'22.62"
M	28°12'51.36"	-25°44'24.75"

ID	Longitude	Latitude
N	28°12'51.95"	-25°44'31.71"
O	28°12'48.40"	-25°44'31.98"
P	28°12'48.07"	-25°44'32.61"
Q	28°12'46.57"	-25°44'33.75"
R	28°12'46.15"	-25°44'32.95"
S	28°12'44.82"	-25°44'32.78"
T	28°12'44,37"	-25°44'34.48"
U	28°12'37.19"	-25°44'32.90"
V	28°12'37.74"	-25°44'30.81"
W	28°12'36.10"	-25°44'30.68"

The Buffer Zone

The buffer zone encircles the entire property and lies between Stanza Bopape Street (formerly Church Street) in the south and the crest of Meintjieskop in the north. The western boundary is formed by the properties along the eastern side of Hamilton Street and the Eastern edge by the properties along the western side of Blackwood Street, and the woodland at the back of the building complex.

Map of the World Heritage Site



ANNEXURE 1 (B)**NAME OF THE SITE:**

Walter Sisulu Square

PROVINCE:

Gauteng Province

EXACT LOCATION OF THE SITE ON MAP WITH GEOGRAPHICAL COORDINATE:**Location of the site:**

The proposed site is located at located on Erf No 11915 of Pimville Zone 9 in Soweto, Johhanesburg, Gauteng Province.

Geographical Coordinates:

Centre of the World Heritage Site: 26°16'40.35"S, 27°53'20.02"E

The description of the boundaries:**The core**

The core of the proposed site lies between office and retail buildings along Square Street to the north and the building that accommodates the Soweto Hotel and retail and office space on Union Street to the south. To the east the boundary is marked by ten square pillars representing the ten Articles of the Freedom Charter. To the west it is bounded by Union Avenue. The core of the proposed site is bound by coordinates as outlined below:

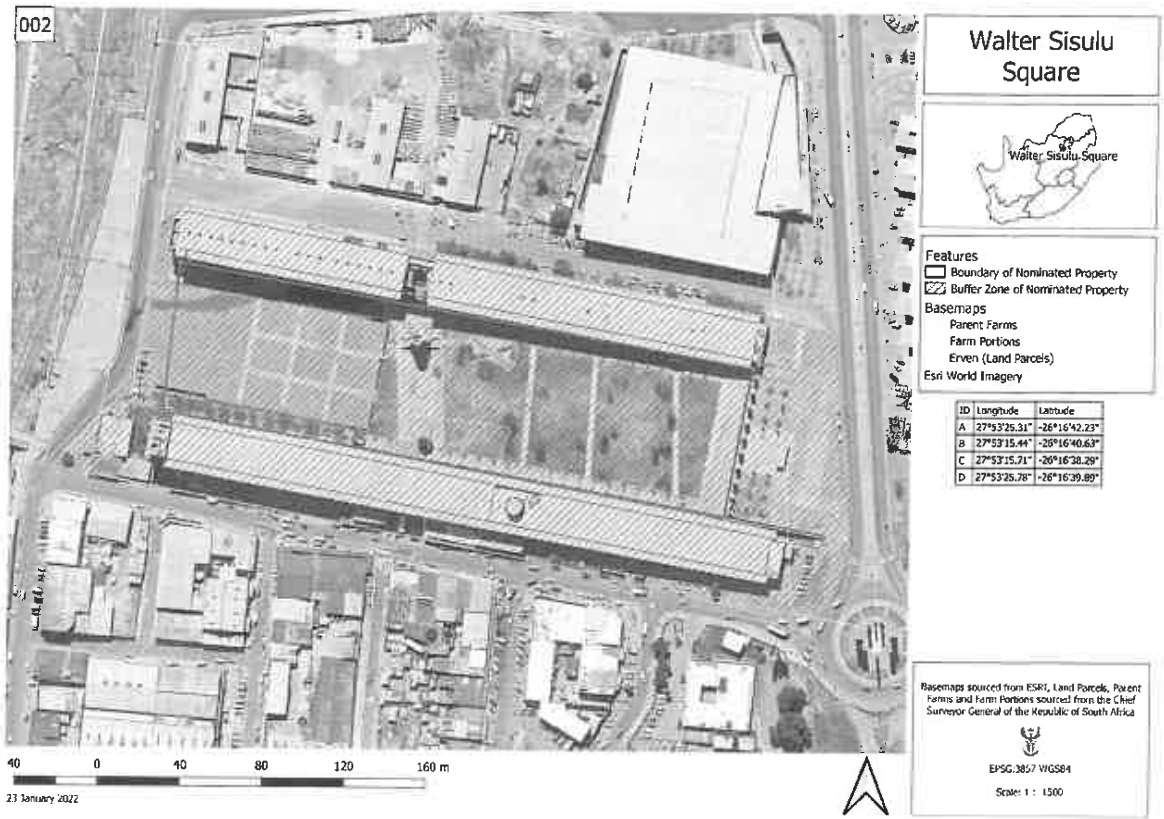
Geographic Co-ordinates

ID	Longitude	Latitude
A	27°53'25.31"	-26°16'42.23"
B	27°53'15.44"	-26°16'40.63"
C	27°53'15.71"	-26°16'38.29"
D	27°53'25.78"	-26°16'39.89"

The Buffer zone

The buffer zone is bounded by Klipspruit Valley Road to the east, Union Street to the south, Main Road to the west and Square Road to the north.

Map of the World Heritage Site



002

Walter Sisulu Square



- Features
- Boundary of Nominated Property
 - Buffer Zone of Nominated Property
- Basemaps
- Parent Farms
 - Farm Portions
 - Erven (Land Parcels)
 - Esri World Imagery

ID	Longitude	Latitude
A	27°53'25.31"	-26°16'42.23"
B	27°53'15.44"	-26°16'40.63"
C	27°53'15.71"	-26°16'38.28"
D	27°53'25.78"	-26°16'39.89"

Basemaps sourced from ESRG, Land Parcels, Parent Farms and Farm Portions sourced from the Chief Surveyor General of the Republic of South Africa


 EPSG:3857 WGS84
 Scale: 1 : 1500

ANNEXURE 1 (C)

NAME OF THE SITE:

Sharpeville Massacre Site: Police Station

PROVINCE:

Gauteng Province

EXACT LOCATION OF THE SITE ON MAP WITH GEOGRAPHICAL COORDINATE:

Location of the site:

The proposed site is located at Erf 9175 on Zwane Street in Sharpeville Township, Vereeniging, Gauteng Province

Geographical Coordinates:

Centre of the World Heritage Site: 26°41'18.18"S, 27°52'18.97"E

The description of the boundaries:

The Core

The core of the proposed site is the buildings on the property, which form a quadrangle opening to the west facing the street on the opposite side of which are situated the Sharpeville Memorial Garden and Library. The main building component is the Charge Office which is a rectangular block 40m x 8m of red face brick with a gable and corrugated-iron roof with hipped ends. A gabled wing set at a right angle to the principal wing is positioned in mid-section facing Zwane Street. The core of the proposed site is bound by coordinates as outlined below:

Geographic Co-ordinates

ID	Longitude	Latitude
A	27°52'17.85"	-26°41'16.78"
B	27°52'21.48"	-26°41'17.74"
C	27°52'20.92"	-26°41'19.39"
D	27°52'20.72"	-26°41'19.51"
E	27°52'17.43"	-26°41'18.62"
F	27°52'17.30"	-26°41'18.45"

Map of the World Heritage Site



40 0 40 80 120 160 m
23 January 2022

Sharpeville Massacre Site: Police Station



Features:
 □ Boundary of Nominated Property
 ■ Buffer Zone of Nominated Property
 Basemaps:
 Land Parcels
 Google Satellite

ID	Longitude	Latitude
A	27°52'17.83"	-26°41'16.78"
B	27°52'21.48"	-26°41'17.74"
C	27°52'20.92"	-26°41'19.39"
D	27°52'20.72"	-26°41'19.51"
E	27°52'17.43"	-26°41'18.62"
F	27°52'17.30"	-26°41'18.45"

Basemaps sourced from Google, Land Parcels sourced from the Chief Surveyor General of the Republic of South Africa

 EPSG:3857 WGS84
 Scale: 1 : 1500



ANNEXURE 1 (D)

NAME OF THE SITE:

Sharpeville Memorial Garden

PROVINCE:

Gauteng Province

EXACT LOCATION OF THE SITE ON MAP WITH GEOGRAPHICAL COORDINATE:

Location of the site:

The proposed site is located at Erf 9172 in Sharpeville Township, Vereeniging, Gauteng Province

Geographical Coordinates:

Centre of the World Heritage Site: 26°41'15.41"S, 27°52'16.63"E

The description of the boundaries:

The Core

The core of the site is the Garden of Remembrance located to the south and an Exhibition Centre, which is outside the nominated property, is located to the north. The core of the proposed site is bound by coordinates as outlined below:

Geographic Co-ordinates

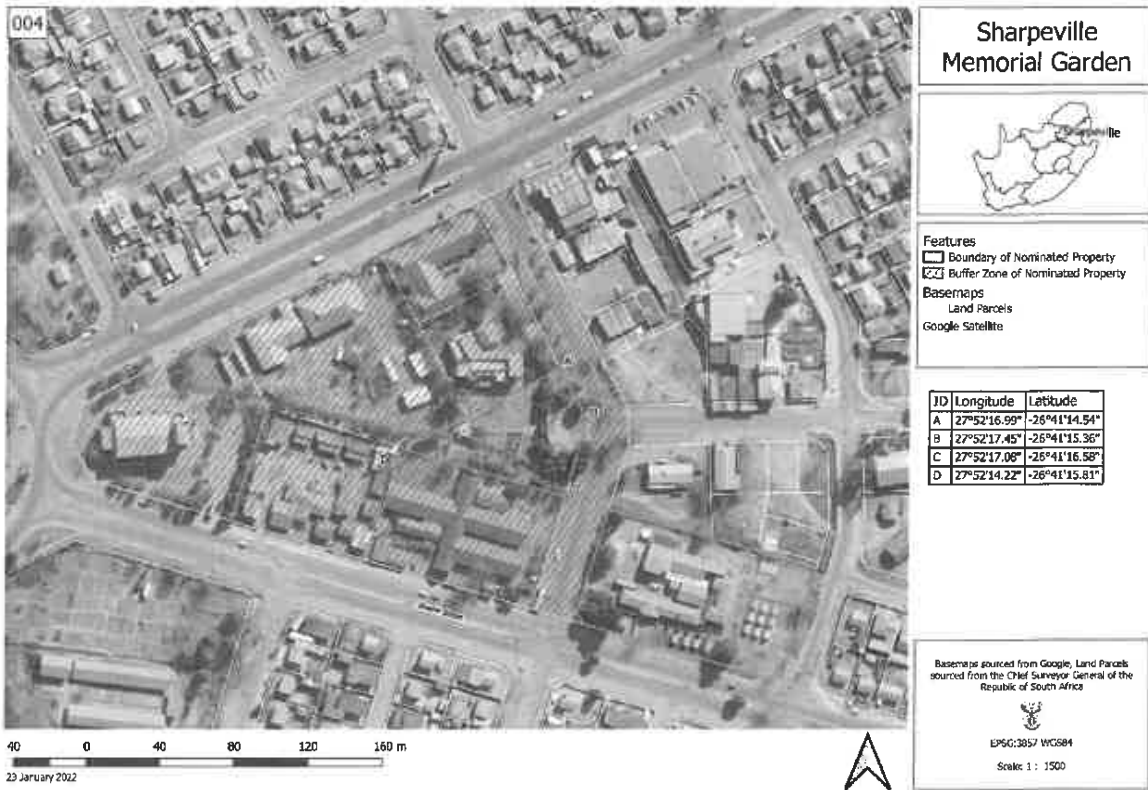
ID	Longitude	Latitude
A	27°52'16.99"	-26°41'14.54"
B	27°52'17.45"	-26°41'15.36"
C	27°52'17.08"	-26°41'16.58"
D	27°52'14.22"	-26°41'15.81"

The Buffer Zone

The buffer zone is a triangle with its apex at the traffic circle (west) and bounded by Seeso Street (north) and Zwane Street (south). On the east side the buffer zone is set along an unnamed road on which is the frontage to the Memorial and Interpretive Centre. In the triangle, the buffer zone encompasses public amenities namely:

- Sharpeville Community Health Centre;
- Community Library; and
- Sharpeville Home for the Aged.

Map of the World Heritage Site



ANNEXURE 1 (E)

NAME OF THE SITE:

Sharpeville Graves Site A

PROVINCE:

Gauteng Province

EXACT LOCATION OF THE SITE ON MAP WITH GEOGRAPHICAL COORDINATE:

Location of the site:

The site proposed is located in the southern central part of the Phelindaba Cemetery, Sharpeville Township, Vereeniging, Gauteng Province.

Geographical Coordinates:

Centre of the World Heritage Site: 26°40'19.46"S, 27°53'14.73"E

The description of the boundaries:

The Core

The core of the property is 63 graves laid out in a single row ca 87m long running in a north-south axis. The core of the proposed site is bound by coordinates as outlined below:

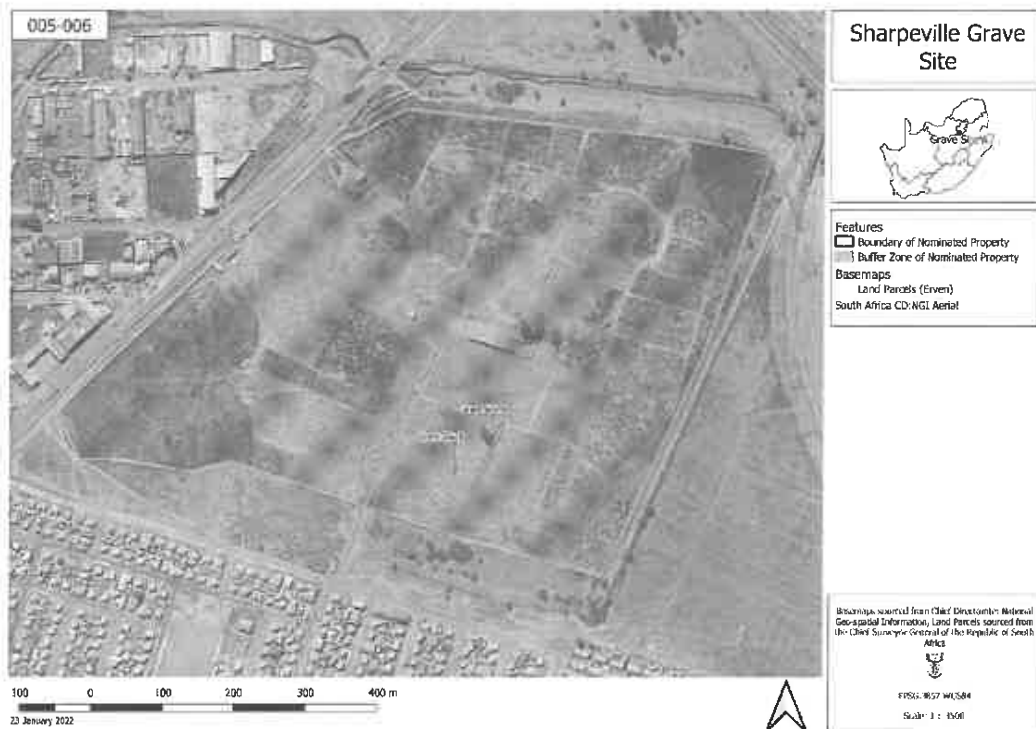
Geographic Co-ordinates

ID	Longitude	Latitude
A	27°53'15,23"	-26°40'17.62"
B	27°53'15.39"	-26°40'17.70"
C	27°53'14.10"	-26°40'20.37"
D	27°53'13.96"	-26°40'20.30"

The Buffer Zone

The buffer zone is the remainder of the Phelindaba Cemetery, Sharpeville Township, Vereeniging, Gauteng Province.

Map of the World Heritage Site



ANNEXURE 1 (F)

NAME OF THE SITE:

Sharpeville Graves Site B

PROVINCE:

Gauteng Province

EXACT LOCATION OF THE SITE ON MAP WITH GEOGRAPHICAL COORDINATE:

Location of the site:

The proposed site is located at Phelindaba Cemetery Sharpeville Township, Vereeniging, Gauteng Province.

Geographical Coordinates:

Centre of the World Heritage Site: 26°40'20.86"S, 27°53'13.75"E

The description of the boundaries:

The core

The core of the property is six graves located in a separate row about 4 metres to the southwest of the main row of graves that make up Sharpeville Grave Site A. The core of the proposed site is bound by coordinates as outlined below:

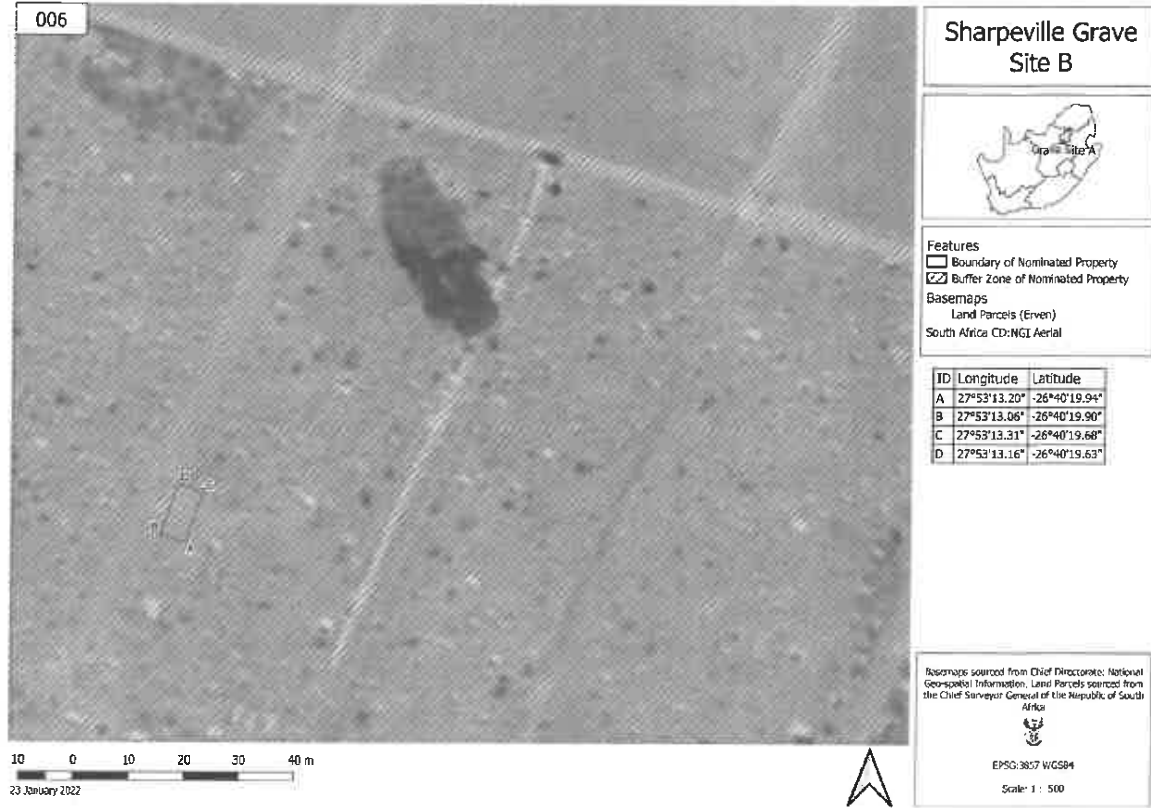
Geographic Co-ordinates

ID	Longitude	Latitude
A	27°53'13.20"	-26°40'19.94"
B	27°53'13.06"	-26°40'19.90"
C	27°53'13.31"	-26°40'19.68"
D	27°53'13.16"	-26°40'19.63"

The Buffer zone

The buffer zone is the remainder of the Phelindaba Cemetery, Sharpeville Township, Vereeniging, Gauteng Province.

Map of the World Heritage Site



ANNEXURE 1 (G)

NAME OF THE SITE:

16 June 1976 – The Streets of Orlando West

PROVINCE:

Gauteng Province

EXACT LOCATION OF THE SITE ON MAP WITH GEOGRAPHICAL COORDINATE:

Location of the site:

The site proposed is Vilakazi, Moema and Pela Streets and Kumalo Main Road in Orlando West, Soweto, Johannesburg. Gauteng Province.

Geographical Coordinates:

Centre of the World Heritage Site: 26°14'19.94"S, 27°54'25.18"E

The description of the boundaries:

Vilakazi, Moema and Pela Streets and Kumalo Main Road in Orlando West, Soweto, Johannesburg. Gauteng Province. The core of the proposed site is bound by coordinates as outlined below:

Geographic Co-ordinates

ID	Longitude	Latitude	ID	Longitude	Latitude
A	27°14'40.598"	-26°14'20.726"	P	27°14'28.033"	-26°14'15.986"
B	27°14'34.725"	-26°14'20.720"	Q	27°14'23.384"	-26°14'20.074"
C	27°14'23.168"	-26°14'16.672"	R	27°14'35.093"	-26°14'20.077"
D	27°14'22.060"	-26°14'16.958"	S	27°14'39.802"	-26°14'19.632"
E	27°14'21.821"	-26°14'16.573"	T	27°14'44.770"	-26°14'23.532"
F	27°14'22.542"	-26°14'15.817"	U	27°14'44.480"	-26°14'23.740"
G	27°14'8.27.324"	-26°14'8.905"	V	27°14'45.852"	-26°14'25.252"
H	27°14'26.937"	-26°14'8.215"	W	27°14'45.490"	-26°14'25.558"
I	27°14'27.922"	-26°14'6.818"	X	27°14'44.061"	-26°14'24.041"
J	27°14'30.126"	-26°14'5.325"	Y	27°14'43.585"	-26°14'24.386"
K	27°14'31.485"	-26°14'6.852"	Z	27°14'43.294"	-26°14'23.514"
L	27°14'30.736"	-26°14'7.383"			
M	27°14'30.761"	-26°14'7.797"			
N	27°14'30.078"	-26°14'8.659"			
O	27°14'28.033"	-26°14'9.237"			

Map of the World Heritage Site



16 June 1976 – The Streets of Orlando West

Features
 □ Boundary of Nominated Property

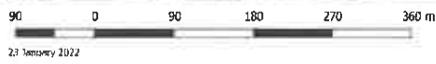
Basemaps
 Parent Farms
 Farm Portions
 Land Parcels (Erven)
 South Africa CD:NGI Aerial

TO	TO X (m)	TO Y (m)
A	-28°14'20.726"	27°54'42.558"
B	-28°14'20.726"	27°54'34.725"
C	-28°14'18.072"	27°54'33.148"
D	-28°14'18.072"	27°54'23.061"
E	-28°14'14.279"	27°54'21.921"
F	-28°14'15.877"	27°54'22.547"
G	-28°14'18.072"	27°54'27.124"
H	-28°14'18.072"	27°54'28.807"
I	-28°14'16.819"	27°54'37.322"
J	-28°14'13.228"	27°54'35.128"
K	-28°14'16.819"	27°54'31.465"
L	-28°14'17.383"	27°54'30.752"
M	-28°14'17.383"	27°54'30.761"
N	-28°14'16.628"	27°54'30.076"
O	-28°14'19.239"	27°54'30.837"
P	-28°14'15.985"	27°54'33.384"
Q	-28°14'20.074"	27°54'30.261"
R	-28°14'19.077"	27°54'30.580"
S	-28°14'19.077"	27°54'30.480"
T	-28°14'23.533"	27°54'44.770"
U	-28°14'23.240"	27°54'44.460"
V	-28°14'25.247"	27°54'43.821"
W	-28°14'23.240"	27°54'45.457"
X	-28°14'24.241"	27°54'44.061"
Y	-28°14'24.396"	27°54'43.585"
Z	-28°14'23.074"	27°54'43.284"

Basemaps sourced from Chief Directorate: National Geo-spatial Information, Parent Farms, Farm Portions and Land Parcels sourced from the Chief Surveyor General of the Republic of South Africa

EPSON 385 / WQ884

Scale: 1 : 3500



ANNEXURE 1 (H)

NAME OF THE SITE:

Constitution Hill

PROVINCE:

Gauteng Province

EXACT LOCATION OF THE SITE ON MAP WITH GEOGRAPHICAL COORDINATE:

Location of the site:

The proposed site is located at the Remainders of Portion 68 and 69 of the Farm Braamfontein 53 IR, Johannesburg, Gauteng Province.

Geographical Coordinates:

Centre of the World Heritage Site: 26°11'23.14"S, 28°02'35.41"E

The description of the boundaries:

The Core

The core of the site is the Remainders of Portion 68 and 69 of the Farm Braamfontein 53 IR. The site is bordered by Kotze Street to the south, Queens Way to the east and Joubert Street to the west. The core of the proposed site is bound by coordinates as outlined below:

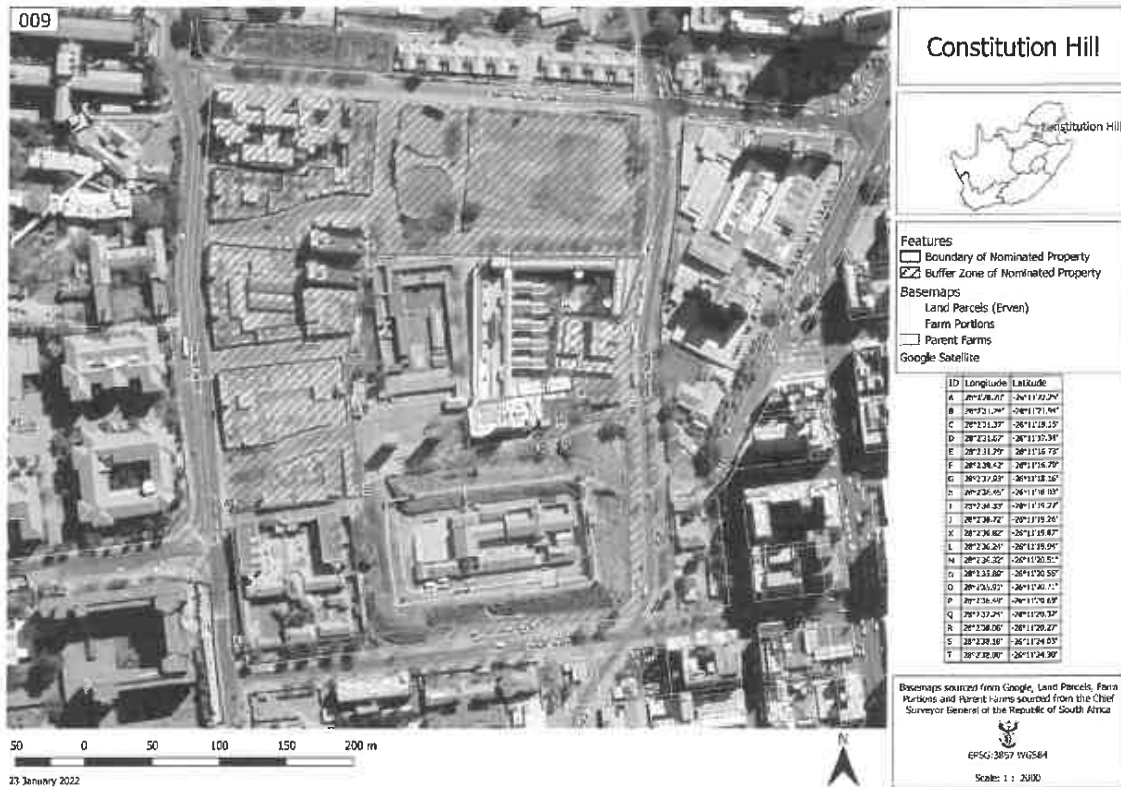
Geographic Co-ordinates

ID	Longitude	Latitude	ID	Longitude	Latitude
A	28°2'28.70"	-26°11'22.25"	P	28°2'36.49"	-26°11'20.63"
B	28°2'31.74"	-26°11'21.94"	Q	28°2'37.24"	-26°11'20.32"
C	28°2'31.37"	-26°11'19.15"	R	28°2'38.06"	-26°11'20.27"
D	28°2'31.67"	-26°11'17.34"	S	28°2'38.18"	-26°11'24.03"
E	28°2'31.79"	-26°11'16.73"	T	28°2'38.00"	-26°11'24.30"
F	28°2'38.42"	-26°11'16.79"			
G	28°2'37.93"	-26°11'18.16"			
H	28°2'36.45"	-26°11'18.03"			
I	28°2'36.33"	-26°11'19.22"			
J	28°2'36.72"	-26°11'19.26"			
K	28°2'36.82"	-26°11'19.87"			
L	28°2'36.24"	-26°11'19.94"			
M	28°2'36.32"	-26°11'20.51"			
N	28°2'35.89"	-26°11'20.55"			
O	28°2'35.91"	-26°11'20.71"			

The Buffer Zone

The buffer zone is the land immediately in front of the proposed site between the prison and Constitutional Court and Sam Hancock Street, bounded on the east by Queens Road and west by Joubert Street.

Map of the World Heritage Site



ANNEXURE 1 (I)**NAME OF THE SITE:**

University of Fort Hare

PROVINCE:

Eastern Cape Province

EXACT LOCATION OF THE SITE ON MAP WITH GEOGRAPHICAL COORDINATE:**Location of the site:**

The site proposed is located on Farm 412 Victoria East or Farm Fort Hare No.143 and the Remainder of Farm Native College Ground No.141 held by Deed of Transfer No. D/T 1594/1968, Dikeni, Eastern Cape Province.

Geographical Coordinates:

Centre of the World Heritage Site: 32°47'9.27"S, 26°50'44.95"E

The description of the boundaries:**The Core**

The core of the property is in University of Fort Hare and is bound by coordinates as outlined below:

Geographic Co-ordinates

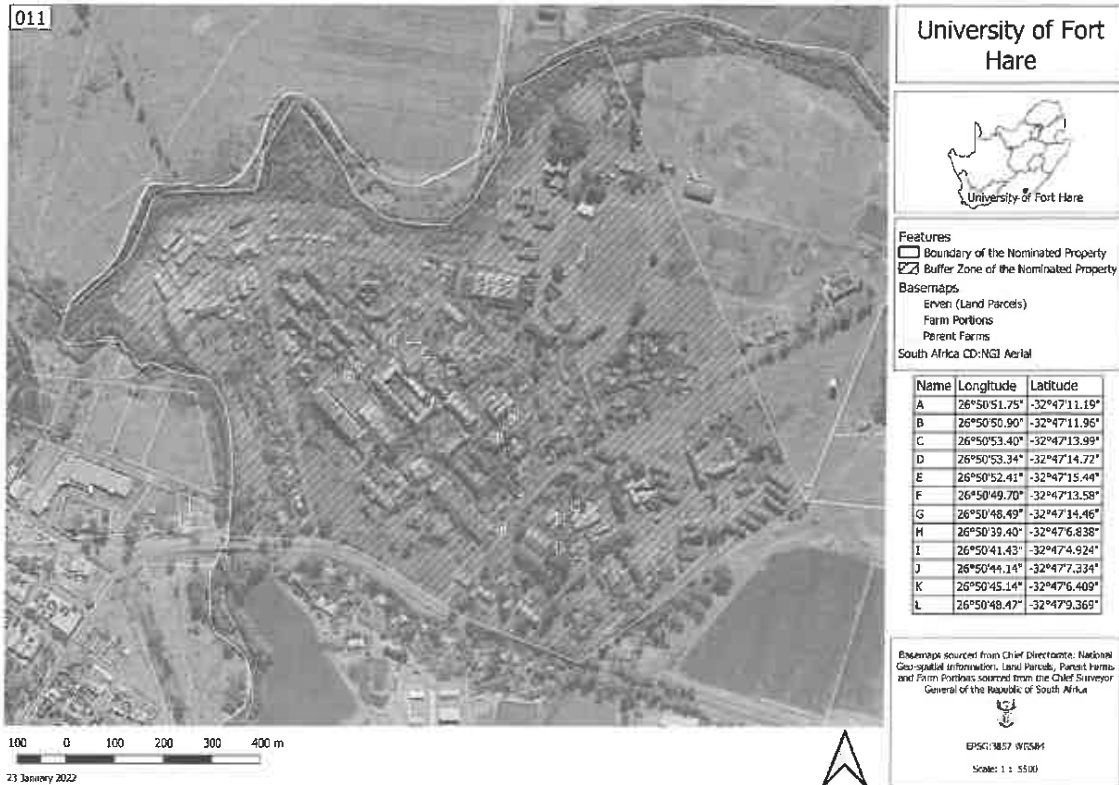
ID	Longitude	Latitude
A	26°50'51.75"	-32°47'11.19"
B	26°50'50.90"	-32°47'11.96"
C	26°50'53.40"	-32°47'13.99"
D	26°50'53.34"	-32°47'14.72"
E	26°50'52.41"	-32°47'15.44"
F	26°50'49.70"	-32°47'13.58"
G	26°50'48.49"	-32°47'14.46"
H	26°50'39.40"	-32°47'6.838"
I	26°50'41.43"	-32°47'4.924"
J	26°50'44.14"	-32°47'7.334"
K	26°50'45.14"	-32°47'6.409"
L	26°50'48.47"	-32°47'9.369"

The Buffer Zone

From the bridge where the Tyume River crosses under the R63 road the boundary runs east along the R63 in the direction of Dimbaza. At coordinates 32°47'21"86"S 26°50'52"75"E it turns to the north-east and runs along the road that runs to the east of the Wesley, ZK Matthews, Jabavu and Jolobe

Residences. At coordinates 32°47'13"44"S 26°51'8"82"E, on the same road, it turns to the north-west and runs in a straight line across the campus to coordinates 32°46'47"61"S 26°50'55"41"E on the Tyume River; and thereafter it runs downstream along the course of the Tyume River back to the bridge over the R63 road.

Map of the World Heritage Site



ANNEXURE 1 (J)

NAME OF THE SITE:

Waaioek Wesleyan Church

PROVINCE:

Free State Province

EXACT LOCATION OF THE SITE ON MAP WITH GEOGRAPHICAL COORDINATE:

Location of the site:

The site proposed is located on subdivision 3 of Erf 1909 held by Deed of Transfer No. T 11326/1994, Bloemfontein, Free State Province.

Geographical Coordinates:

Centre of the World Heritage Site: 29°7'24.61"S, 26°13'24.93"E

The description of the boundaries:

The core of the proposed site is on subdivision 3 of Erf 1909 in Bloemfontein, Free State Province. It is bounded by Fort Street to the north, a parking lot owned by the Motheo FET College to the west, the cooling towers of the Bloemfontein Power Station to the south and interpretation centre to the east.

The core is bound by coordinates as outlined below:

Geographic Co-ordinates

ID	Longitude	Latitude
A	26°13'24.92"	-29°7'23.07"
B	26°13'26.51"	-29°7'23.37"
C	26°13'26.04"	-29°7'25.13"
D	26°13'24.47"	-29°7'24.81"

The Buffer Zone:

The buffer zone of the proposed site is bound by the undeveloped, open area to its west, the two power station cooling towers to its South, Harvey Road to its East and the Old Waaioek Houses across Fort Street.

Map of the World Heritage Site

