

**DEPARTMENT OF FORESTRY, FISHERIES AND THE ENVIRONMENT**

**NO. 3570**

**23 June 2023**

**NATIONAL ENVIRONMENTAL MANAGEMENT: PROTECTED AREAS ACT, 2003  
(ACT NO. 57 OF 2004)**

CONSULTATION ON THE INTENTION TO DECLARE CERTAIN AREAS TO BE THE GYS WIESE PROTECTED ENVIRONMENT, TO ASSIGN THE MANAGEMENT OF THE PROTECTED ENVIRONMENT TO THE MELKBOOMHOEK CLOSE CORPORATION AND TO RESTRICT AND REGULATE DEVELOPMENT AND OTHER ACTIVITIES IN THE GYS WIESE PROTECTED ENVIRONMENT IN TERMS OF THE NATIONAL ENVIRONMENTAL MANAGEMENT: PROTECTED AREAS ACT, 2003 (ACT NO. 57 OF 2003)

I, Barbara Dallas Creecy, Minister of Forestry, Fisheries and the Environment, hereby consult on my intention to declare privately owned areas situated in the Northern Cape Province as the Gys Wiese Protected Environment under sections 28(1)(a)(i) and 28(1)(b), read with sections 31 and 33, of the National Environmental Management: Protected Areas Act, 2003 (Act No. 57 of 2003); to assign the management of the Gys Wiese Protected Environment to the Melkboomhoek Close Corporation in terms of section 38(1)(b) of the National Environmental Management: Protected Areas Act, 2003 (Act No. 57 of 2003); and to restrict or regulate, in the Gys Wiese Protected Environment, development that may be inappropriate for the area given the purpose for which the area was declared and the carrying out of other activities that may impede such purpose under section 51 of the National Environmental Management: Protected Areas Act, 2003 (Act No. 57 of 2003), as set out in the Schedule hereto.

Members of the public are invited to submit to the Minister, within 60 days from the date of the publication of this Notice in the *Gazette*, written representations, or objections to the following address:

By post to: The Director-General  
Department of Forestry, Fisheries and the Environment  
Attention : Ms Sibongile Mampe  
Private Bag X447  
PRETORIA  
0001

By hand to: Environment House, 473 Steve Biko Road, Arcadia, Pretoria, 0083

By mail to: [smampe@dffe.gov.za](mailto:smampe@dffe.gov.za)

Any enquiries in connection with the notice can be directed to Ms Sibongile Mampe at 012 399 9557. **Comments received after the closing date may be disregarded.**

Barney

**BARBARA DALLAS CREECY**  
**MINISTER OF FORESTRY, FISHERIES AND THE ENVIRONMENT**

## SCHEDULE

### **1. THE FOLLOWING PRIVATELY OWNED AREAS SITUATED IN THE NAMAQUALAND REGISTRATION DIVISION, NORTHERN CAPE PROVINCE CONSTITUTE THE GYS WIESE PROTECTED ENVIRONMENT**

- 1.1 Portion 5 of the Farm Doornfontein No. 464, Namaqualand Registration Division, Northern Cape Province, in extent 116.4728 hectares, held by Deed of Transfer No. T95283/2007;
- 1.2 Portion 10 of the Farm Grootberg No. 442, Namaqualand Registration Division, Northern Cape Province, in extent 785.1756 hectares, held by Deed of Transfer No. T95283/2007; and
- 1.3 Remainder of the Farm Melkboom Hoek No. 443, Namaqualand Registration Division, Northern Cape Province, in extent 142.5290 hectares, held by Deed of Transfer No. T95283/2007.

### **2. ASSIGNMENT OF A MANAGEMENT AUTHORITY**

- 2.1 The management of the Gys Wiese Protected Environment is assigned to the Melkboomhoek Close Corporation.
- 2.2 The management authority of the Gys Wiese Protected Environment is required to manage this protected environment in terms of section 40(1) of the National Environmental Management: Protected Areas Act, 2003 (Act No. 57 of 2003).

### **3. PURPOSE OF DECLARATION OF GYS WIESE PROTECTED ENVIRONMENT**

- 3.1 The purpose for which the Gys Wiese Protected Environment is declared, is to—
  - (a) serve as a buffer zone for the conservation and protection of the Namaqua National Park;
  - (b) enable the owner of the land to take action to conserve biodiversity and to provide legal recognition for the Gys Wiese Protected Environment; and
  - (c) protect the Namaqua National Park by restricting development and activities within the Gys Wiese Protected Environment.

### **4. RESTRICTION OF DEVELOPMENT AND OTHER ACTIVITIES IN THE GYS WIESE PROTECTED ENVIRONMENT**

#### **4.1. APPLICATION**

- 4.1.1 Development and other activities in the Gys Wiese Protected Environment that may be inappropriate for the area and may impede the purpose for which this protected environment was declared, are restricted according to—
  - (a) The zonation plan set out in Appendix 1 and depicted in the management plan which can be accessed at <https://wildernessfoundation.co.za/spaces/>; and
  - (b) The Grazing Guidelines for the veld types of Gys Wiese Protected Environment depicted in the management plan and the Grazing Guidelines for Namaqualand which can be accessed at <https://wildernessfoundation.co.za/spaces/>.

## **4.2. RESTRICTION OF DEVELOPMENT AND OTHER ACTIVITIES IN THE CONSERVATION ZONE**

4.2.1 Insofar as development and other activities in the Conservation Zone are restricted, activities or developments conducted therein must be undertaken in line with the management plan and may not result in a transition away from conservation, agricultural and ecotourism land uses.

4.2.2. Development or activities within the Conservation Zone are limited to:

- (a) Grazing of livestock and game according to the grazing guidelines;
- (b) Ecotourism related developments or activities;
- (c) Hunting of game for culling purposes;
- (d) Provision and maintenance of infrastructure to the extent necessary for agricultural and conservation related activities;
- (e) The rehabilitation of degraded areas; and
- (f) Construction of small scale infrastructure and related activities necessary to ensure the continued functioning and integrity of the natural ecosystems.

## **4.3. RESTRICTION OF DEVELOPMENT AND OTHER ACTIVITIES IN THE HIGH IMPACT ZONE**

4.3.1 Insofar as development and other activities in the High Impact Zone are restricted, activities or developments conducted therein must be undertaken in line with the management plan and may not result in a transition away from agricultural and ecotourism land uses.

4.3.2. Developments or activities within the High Impact Zone are limited to the following:

4.3.2.1. Intensive agricultural activities and construction of related infrastructure such as:

- (a) Homesteads.
- (b) Staff accommodation;
- (c) Ancillary or related farm infrastructure (such as: barns, stores, sheds, administrative offices, intensive working kraals); and
- (d) Dams, access roads and fences.

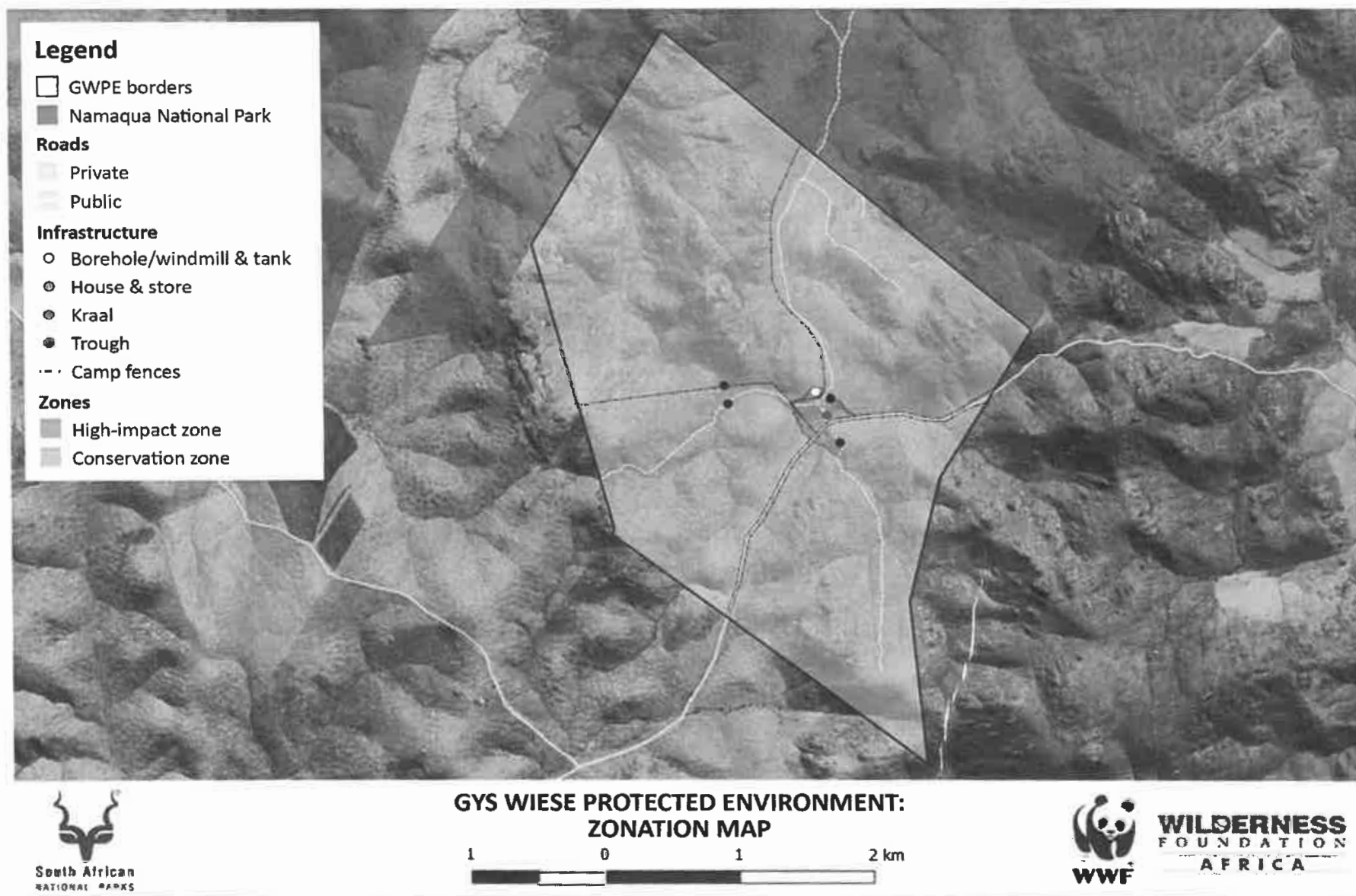
4.3.2.2. Ecotourism activities and construction of related infrastructure, such as:

- (a) Lodges;
- (b) Ecotourism related facilities; and
- (c) Administrative facilities.

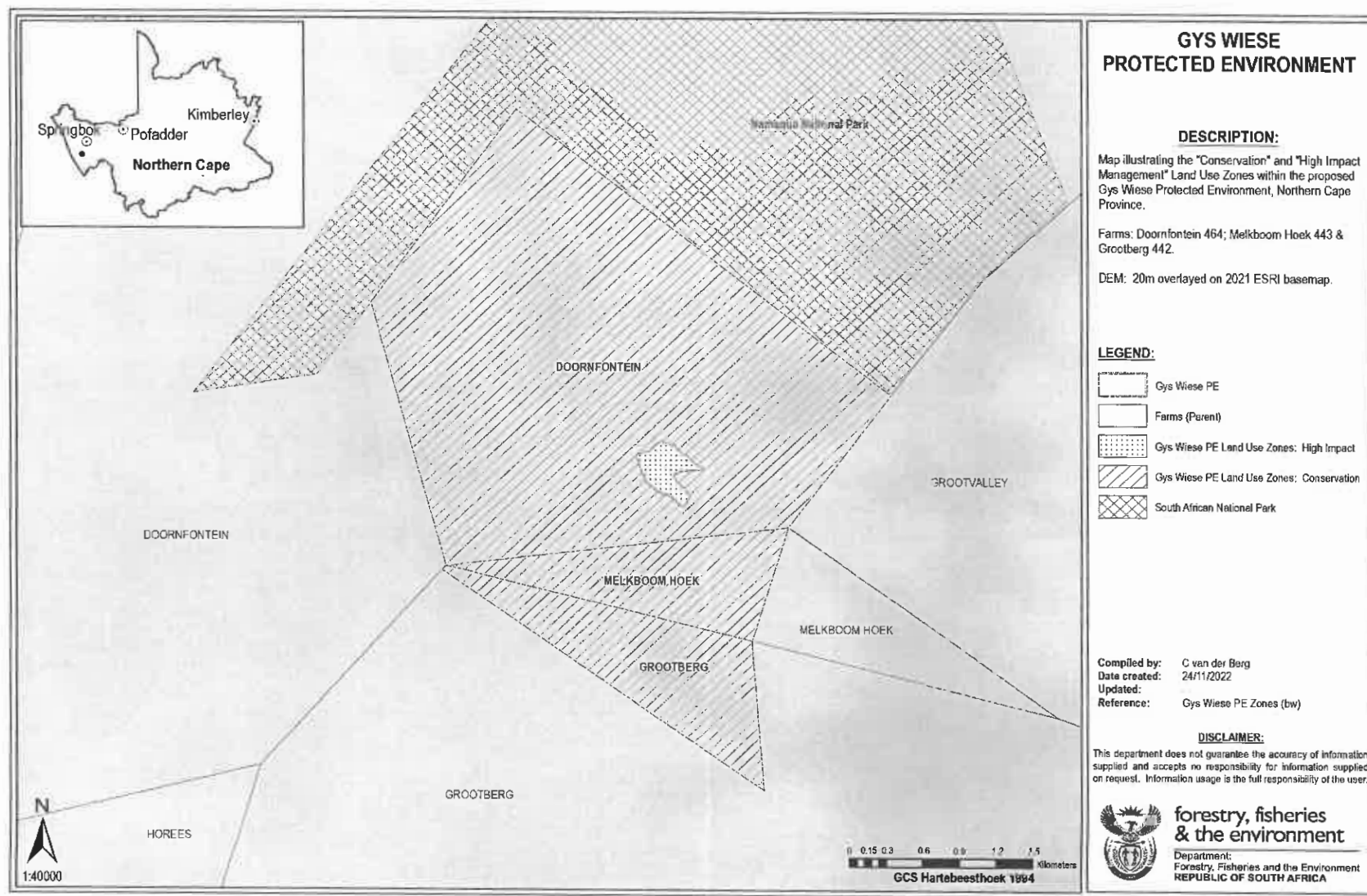
4.3.2.3. Provision of space for the construction of infrastructure essential for the management and sustainable use of the Gys Wiese Protected Environment; and

4.3.2.4. Activities permitted in the "Conservation Zone".

**Appendix 1:** Gys Wiese Protected Environment Zonation Plan (Map and Table) extracted from the Gys Wiese Protected Environment Management Plan







User Zone	Zone Description	Management Objectives
Conservation Zone	<p>This zone is managed for Biodiversity conservation and sustainable livestock grazing. Livestock grazing is practiced in four camps on a rotational basis and the stock are also rotated between farms on a seasonal basis.</p> <p>Recommended stocking rates described in the 'Grazing Guidelines for Namaqualand, 2018 (*) documents provided need to be implemented.</p> <p>Basic agricultural infrastructure (water troughs, water storage, bore holes, fences, roads) is also located in this zone.</p> <p>Degraded sites (including old, cultivated lands, erosion sites, and overgrazed/trampled areas) are to be identifies for rehabilitation.</p>	<p>a.) Ensure ecosystem integrity and functioning.</p> <p>b.) Rehabilitation of degraded sites to counter the effects of erosion and alien invasive plant species.</p> <p>c.) Infrastructure maintenance</p> <p>d.) Monitoring and management of veld condition in line with the recommended</p> <p>*Grazing Guidelines for Namaqualand</p> <ul style="list-style-type: none"> <li>◦ <i>Namaqualand Klipkoppe Shrubland (SKn1)</i> : 10-13 ha / (Small Stock Unit);</li> <li>◦ <i>Namaqualand Heuweltjieveld: 12ha/SSU</i></li> </ul>
High-impact Zone	<p>High impact zone includes infrastructure associated with the administration, maintenance, management, tourism, and other Management Authority related purposes for the GWPE.</p> <p>Future high-impact infrastructure development will be in the high impact zone.</p> <p>A developed tourist and agricultural node with associated infrastructure.</p>	<p>a.) Maintenance of infrastructure for the management and sustainable utilisation of the GWPE.</p> <p>b.) Provision of space for possible future developments related to nature conservation, eco-tourism, and agriculture.</p>