
GENERAL NOTICES • ALGEMENE KENNISGEWINGS

DEPARTMENT OF AGRICULTURE, FORESTRY AND FISHERIES

NOTICE 210 OF 2019

INTENTION TO DECLARE STATE FORESTS PROPERTIES AS FOREST NATURE RESERVES UNDER SECTION 8(1) OF THE NATIONAL FORESTS ACT, 1998 (ACT NO 84 OF 1998)

I, Avhashoni Renny Madula, on behalf of the Minister of Agriculture, Forestry and Fisheries hereby give notice of the intent to declare the State Forests as set out in Schedule A as Forest Nature Reserves under Section 8 (1) of the National Forests Act, 1998..

In terms of Section 9(1)(a) of the National Forests Act, 1998, interested and affected parties are invited to submit written representation on or objections to the proposed declaration within sixty (60 days) from the date of this notice by submitting it to the following postal address:

Ms. S. Dzivhani
Directorate: Forestry Regulation and Oversight
Department of Agriculture, Forestry and Fisheries
Private Bag X 93
Pretoria
0001
Fax: (012) 309 5840
Shumanid@daff.gov.za

AR Madula (Mr)
DIRECTOR: FORESTRY REGULATION AND OVERSIGHT

SCHEDULE A: Proposed properties for declaration

Name of proposed nature reserve	Property description	Size of property (ha)	Locality
Twefontein	A part of ptn 1 of the farm Hartebeestvlakte 163 JT; A part of the Remainder of the farm Geelhoutboom 565 KT; A part of the Remainder of the farm Twefontein 167 JT; A part of the Remainder of the farm Ceylon 197 JT; A part of the Remainder of the farm Mountain Top 161 JT; A part of the farm Lot E 201 JT; A part of the farm Lot D 202 JT; A part of the Remainder of the farm Lot C 204 JT; Ptn 1 of the farm Lot C 204 JT	1116,86	Thaba Chweu, Registration Division KT
Berlin	A part of the Remainder of the farm The Narrows 482 JT; A part of the farm Coetzeestroom 479 JT; A part of the farm Uitkyk 502 JT; A part of the Remainder of the farm Bridle 511 JT; A part of the Remainder of the farm KaapscheHoop 483 JT; A part of the Remainder of the farm Berlin 446 JT; A part of the farm The Wattles 509 JT; A part of the Remainder of the farm Majuba 508 JT	1288,29	Mbombela , Registration Division JT
Blyde	A part of the Remainder of the farm Berlyn 506 KT; A part of the Remainder of the farm Lisbon 531 KT; A part of the Remainder of the farm New York 530 KT; A part of ptn 1 of the farm Lisbon 531 KT	1482,73	Thaba Chweu, Registration Division KT
Uitsoek	A part of the Remainder of the farm Lisabon 262 JT; A part of the Remainder of the farm Kantoorbos 263 JT; A part of ptn 1 of the farm Uitkyk 264 JT	352,91	Thaba Chweu, Registration Division KT
Morgenzon	A part of ptn 3 of the farm Morgenzon 525 KT; Ptn 1 of the farm Peach Tree No 544 KT; A part of the Remainder of the farm Peach Tree No 544 KT	607,11	Thaba Chweu, Registration Division KT
TOTAL		4847,89	

Note: Property diagrams for the nature reserves to be declared can be obtained from the above email address

Motivation for declaration of five State Forest Nature Reserves -SAFCOL

Figure 1.1: Location Tweefontein Nature Reserve

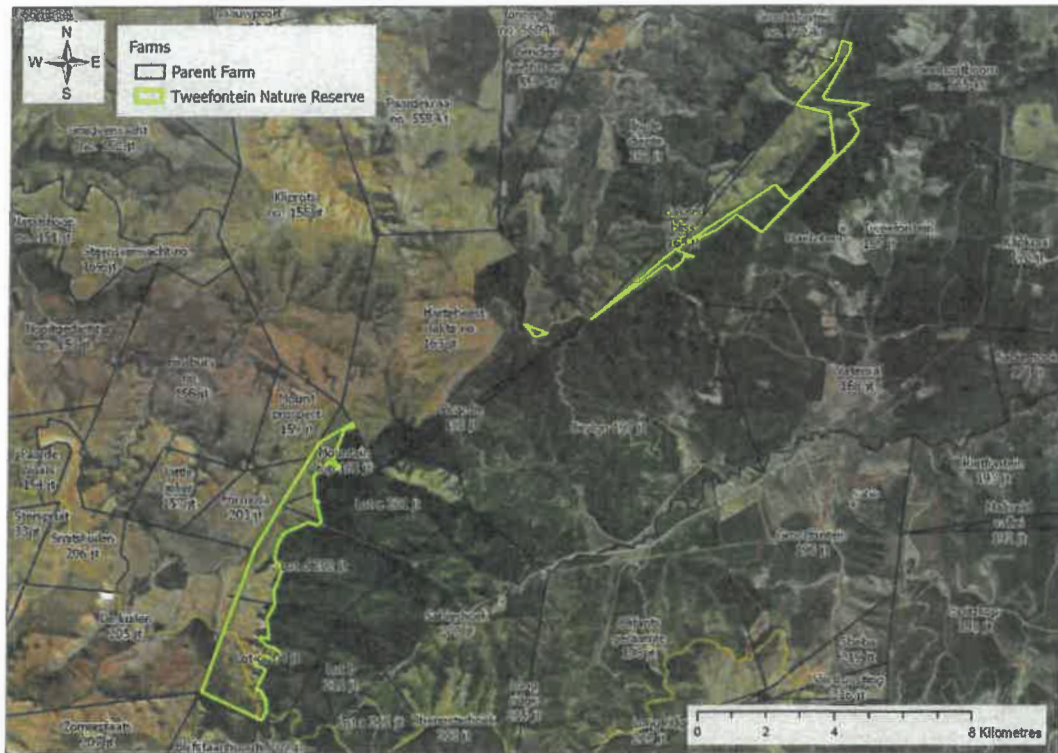
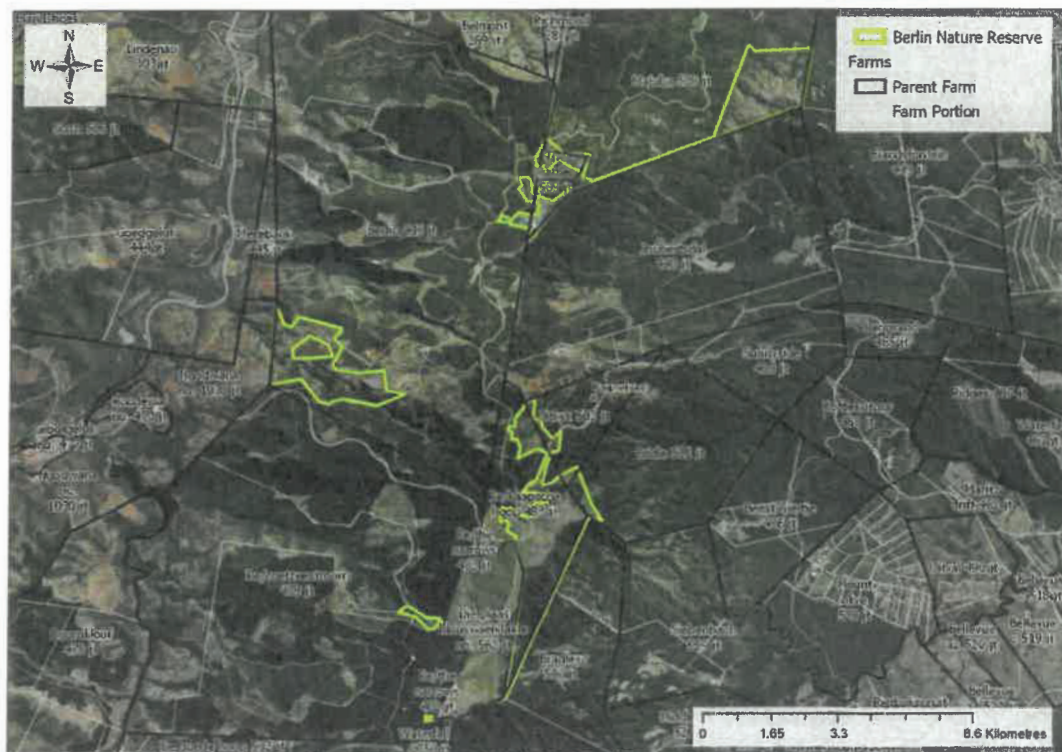


Figure 1.2: Location Berlin Nature Reserve



Motivation for declaration of five State Forest Nature Reserves -SAFCOL

Figure 1.3: Location Blyde Nature Reserve

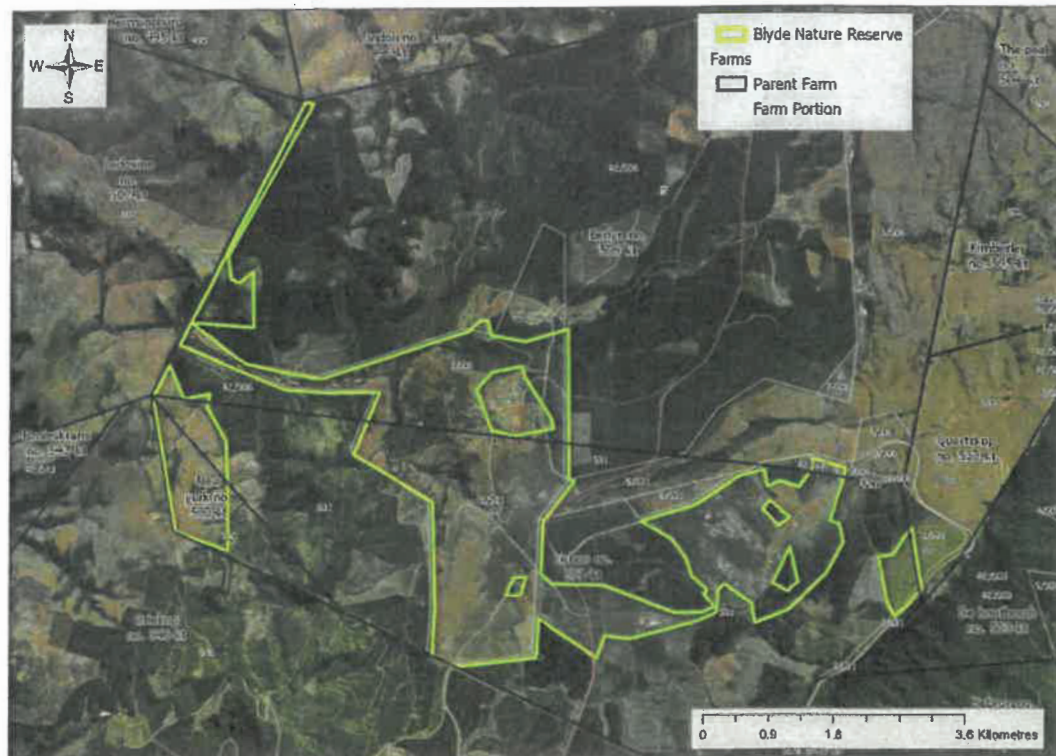


Figure 1.4: Location Uitsoek Nature Reserve

